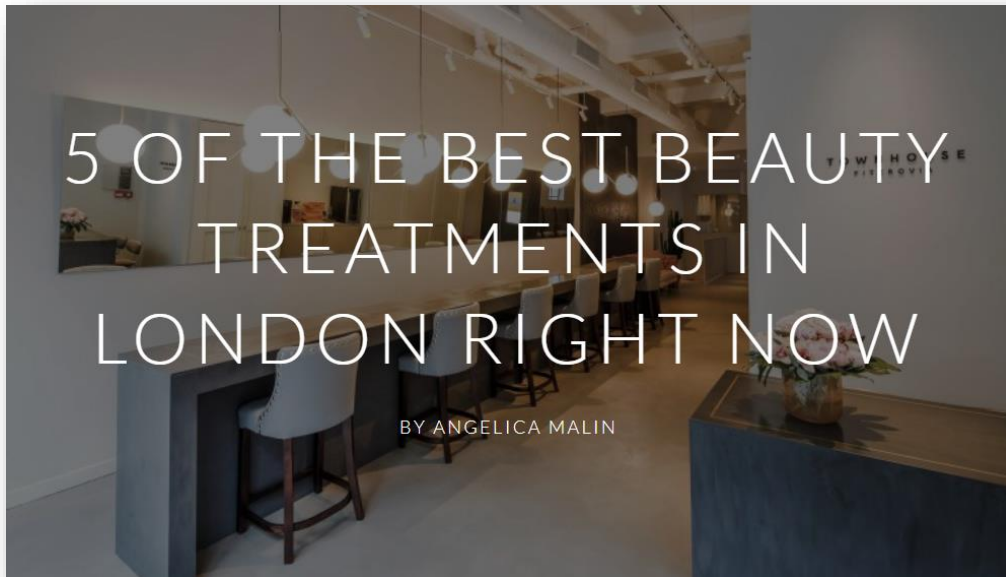


ABOUT TIME .



The Lowdown: LPG **endermologie** offers a 40-minute intense yet pleasant deep tissue massage – endermologie is a proven anti-ageing and body contouring skin fitness solution. After being used by 300,000 people daily worldwide and receiving ten generations of development, the brand new CELLU M6 therapy provides an entirely bespoke non-invasive and non-aggressive treatment. After a full skin assessment, areas requiring the most attention receive a targeted massage with the mechanism’s motorised rollerball head. Stimulating skin cells to produce collagen and hyaluronic acid, endermologie is an easy and low maintenance solution for non-beauty fanatics to enjoy alongside a healthy lifestyle.



**ABOUT TIME
AUGUST 2018**